

# SLOFEC™ PipeScanner Info

- General Information
- SLOFEC™ PipeScanner PS 200E V1
- SLOFEC™ PipeScanner LS120P-TypB. V1
- SLOFEC™ PipeScanner LS100P.V1



[www.innospection.com](http://www.innospection.com)



# SLOFEC™



## Pipe / Vessel Inspection Services



## The Technique

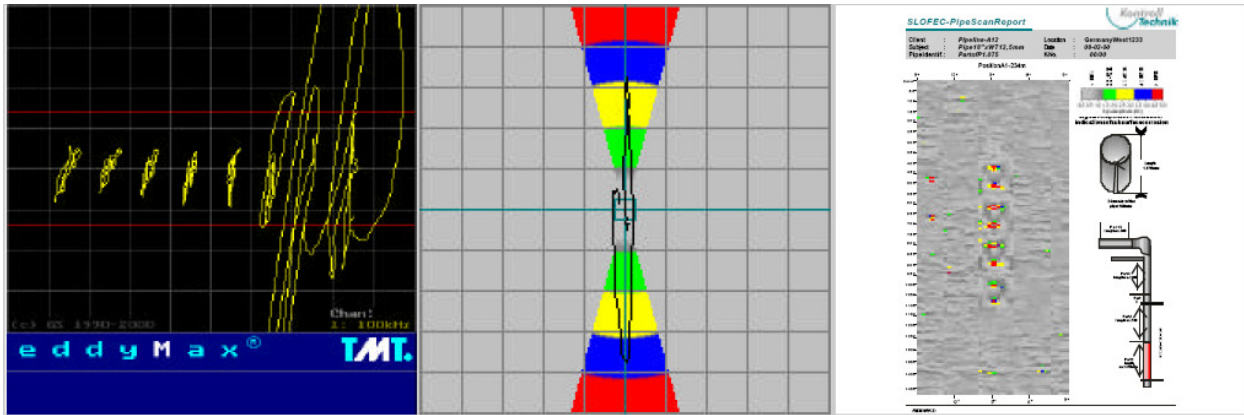
The SLOFEC Pipe / Vessel Inspection Tools are based on the Eddy Current technique. The SLOFEC (Saturated Low Frequency Eddy Current) technique has significant advantages to existing Magnetic Flux Leakage (MFL) and Ultrasonic Testing (UT) systems.

Its superiority is based on the following :

- Applicable to wall thickness up to 30mm
- Able to inspect through thick coatings
- High inspection speed
- High defect detection capability
- Detection and distinction between top-side and bottom-side corrossions
- No couplant is necessary
- Applicable for inspection of both ferromagnetic and non-ferromagnetic materials

# SLOFEC™

Pipe / Vessel Inspection Services



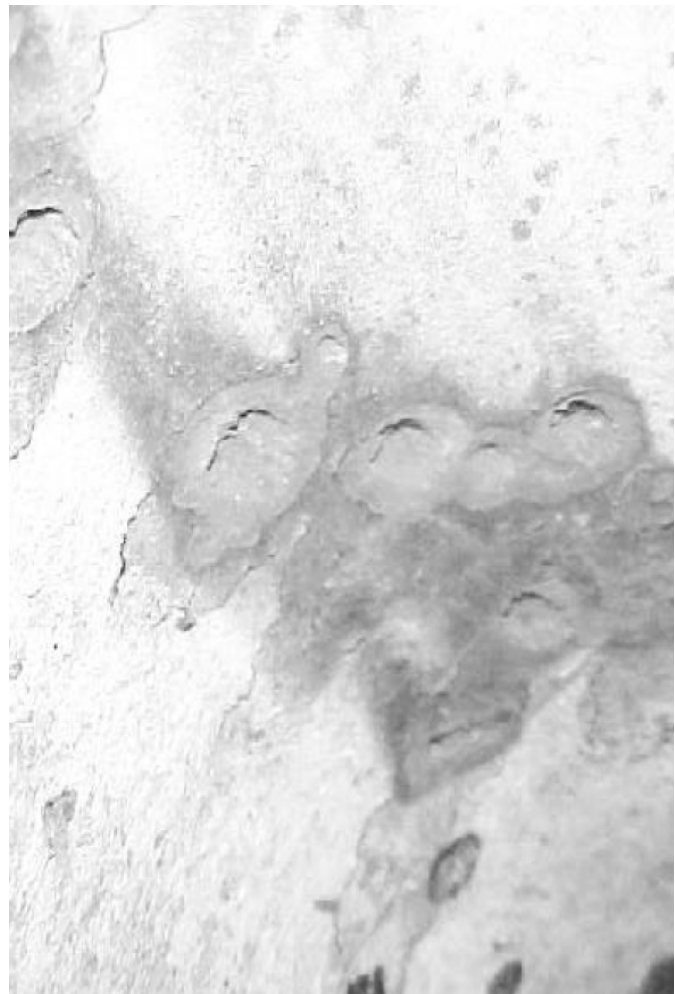
## The Documentation

The SLOFEC PipeScanners are able to fulfill all defect marking and documentation requirements.

All signal data can be stored on the computer hard disk and retrieved whenever necessary.

Every scanned track can be processed and combined to a colour scan of the inspected pipe.

The colour maps for every part of the inspected pipe are generated with the original software package.



# SLOFECT™



## Pipe / Vessel Inspection Services



### The Scanner PS200E.V1

The mechanical design of the PipeScanner **PS200E.V1** allows the fast, accurate and cost effective operation of the inspection tool on both pipes and vessels.

The capabilities of this tool are:

- Applicable to wall thickness up to 25mm
- Applicable to coating thickness up to 6mm
- Applicable to diameter from 6 inch
- Effective operation by 200mm scanning width
- Trigger wheel for distances constant scanning
- Pole shoes and sensor fixture exchangeable
- 8-channel sensor array for high defect resolution (optional 8-channel absolute mode for detection of large area corrosion)

### Technical Data

#### Scanner PS200E.V1

- Weight : 43 kg
- Dimensions : 480 x 300 x 220mm (LxWxH)
- No. of Sensors : 8
- Sensor Width : 25mm each

#### Power Supply Unit

- Power Supply : 110VAC – 240VAC  
40 VDC (magnetisation)  
24 VDC (electronics)
- Weight : 22 kg
- Dimensions : 500 x 500 x 500 mm (LxWxH)

#### Signal Cable

- Max. cable length : 100 meters
- Weight : 0.3 kg/m

#### Eddy Current Unit and Computer

- Type : EddyMax ec-Computer plug-in boards
- No. of boards : 1x (optional 2x for testing in differential and absolute mode)
- Computer : Laptop (upon customer specification)

Innospection Limited

Unit 1, Howemoss Avenue, Kirkhill Industrial Estate, Dyce, Aberdeen, AB21 0GP, United Kingdom

Phone : +44 (0) 1224 724 744 Fax : +44 (0) 1224 774 087

Web : [www.innospection.com](http://www.innospection.com)

## Pipe / Vessel Inspection Services



### The Scanner LS120P-TypB.V1

The PipeScanner **LS120P-TypB.V1** is designed as a light weight, easy to handle too for fast and effective tube, pipe, vessel and flat area inspection with wall thickness up to 14mm. The interruptible magnetisation allows the easy handling of the tool.

The capabilities of this tool are:

- Applicable to wall thickness up to 12 – 14mm
- Applicable to coating thickness up to 6mm
- Applicable to diameter from 1 inch
- Effective operation by 100mm scanning width
- Trigger wheel for distances constant scanning
- Pole shoes and sensor fixture exchangeable
- 4-channel sensor array for high defect resolution
- Interruptible magnetisation

### Technical Data

#### Scanner LS120P.V1

- Weight : ~ 15 kg
- Dimensions : 220 x 130 x 140mm (LxWxH)  
(without handgrips)
- No. of Sensors : 4
- Sensor Width : ~ 20mm (varies with diameter)
- Magnetisation : permanent magnets

#### Signal Cable

- Max. cable length : 50 meters
- Weight : 0.3 kg/m

#### Eddy Current Unit and Computer

- Type : EddyMax ec-Computer  
plug-in boards
- No. of boards : 1x
- Computer : Laptop (upon customer  
specification)

# SLOFECT™



## Pipe / Vessel Inspection Services



### The Scanner LS100P.V1

The PipeScanner **LS100P.V1** is designed as a light weight, easy to handle tool for fast and effective tube, pipe, vessel and flat area inspection.

The capabilities of this tool are:

- Applicable to wall thickness up to 9mm
- Applicable to diameter from 1 inch
- Effective operation by 100mm scanning width
- Trigger wheel for distances constant scanning
- Pole shoes and sensor fixture exchangeable
- 4-channel sensor array for high defect resolution

### Technical Data

#### Scanner LS100P.V1

- Weight : ~ 10 kg
- Dimensions : 220 x 130 x 140mm (LxWxH)  
(without handgrips)
- No. of Sensors : 4
- Sensor Width : ~ 20mm (varies with diameter)
- Magnetisation : permanent magnets

#### Signal Cable

- Max. cable length : 50 meters
- Weight : 0.3 kg/m

#### Eddy Current Unit and Computer

- Type : EddyMax ec-Computer  
plug-in boards
- No. of boards : 1x
- Computer : Laptop (upon customer  
specification)